

X1990.702

Figure

Ivory
8 3/4 x 1 3/4 x 1 3/4 in. (22.23 x 4.45 x 4.45 cm)
The Stanley Collection



2002.106 a-o

El Anatsui

Transit

2002
Wood, pigment
4 x 24 in. (10.16 x 60.96 cm)
Purchased with funds from the Stanley-UI Foundation Support
Organization



1969.485

Bamana peoples

Mask (Kono society)

Wood with encrusted patina
35 x 12 x 8 in. (88.9 x 30.48 x 20.32 cm)
Gift of Mr. and Mrs. Gaston de Havenon



2000.18

75.2000

Bamana peoples

Bogolanfini

35 x 60 in. (88.9 x 152.4 cm)
Purchased with funds from Robert F. and Delores DeWilde
Bina



2000.19

76.2000

Bamana peoples

Bogolanfini

c. 1999

48 in. (121.92 cm)

African Art Purchase Fund Stanley - UI



2008.26

28.2008

Bamana peoples

Boli (magical figure)

Mixed media

18 1/2 x 11 x 25 in. (46.99 x 27.94 x 63.5 cm)

Purchased with funds from the Friends of the Museum of Art
Foundation



X1986.210

Bamana peoples

Mask (hyena)

Wood

18 x 8 1/4 x 9 1/2 in. (45.72 x 20.96 x 24.13 cm)

The Stanley Collection



X1986.485

862.1983

Bamana peoples

Female figure [nyeleni]

Wood, cord

23 3/4 x 5 1/2 x 5 1/4 in. (60.3 x 14 x 13.3 cm)

The Stanley Collection



1986.86

Bamileke peoples

Hat

Cotton and raffia

7 x 6 x 6 in. (17.8 x 15.2 x 15.2 cm)

Anonymous gift in honor of Betty Stanley



X1990.601

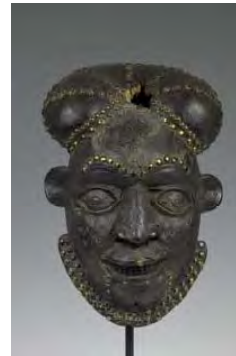
Bamileke peoples

Bekom (mask)

Wood, copper

15 5/8 x 12 5/8 x 6 1/4 in. (39.69 x 32.07 x 15.88 cm)

The Stanley Collection



2003.23

66.2003

Bana Guili peoples

Dibul Kouan (woman's beaded apron)

mid 20th century

Beads, cotton fiber, shells

8 1/2 x 23 1/4 in. (21.59 x 59.06 cm)

Museum of Art African Collection Fund with support from J. Randolph Lewis, M.D. and Linda Lewis



X1986.501

305.1982

Chokwe peoples

Mask

Wood, fiber

14 x 13 x 12 in. (35.56 x 33.02 x 30.48 cm)

The Stanley Collection



X1990.598

1.1985

Chokwe peoples
Cihongo (mask)

Wood, fiber, cotton, bark, raffia
11 1/2 x 9 x 10 3/4 in. (29.21 x 22.86 x 27.31 cm)
The Stanley Collection



X1986.522

280.1982

Dan peoples
Wakemia (ladle)

Wood, metal
25 1/2 x 7 x 4 1/2 in. (64.77 x 17.78 x 11.43 cm)
The Stanley Collection



X1990.692

968.1988

Democratic Republic of the Congo
Letter opener with equestrian figure

Ivory
13 3/8 x 3/4 x 1 3/4 in. (33.97 x 1.91 x 4.45 cm)
The Stanley Collection



X1990.652

Ding
Mask

Copper
12 x 8 3/8 x 2 7/8 in. (30.48 x 21.27 x 7.3 cm)
The Stanley Collection



2001.27

27.2001a,b (b=stand)

Edo peoples

Plaque

16th - 17th century

Bronze

11 1/2 x 9 3/4 x 3/4 in. (29.21 x 24.77 x 1.91 cm)

Purchased with funds from Mary Jo and Richard H. Stanley



X1986.540

173.1983

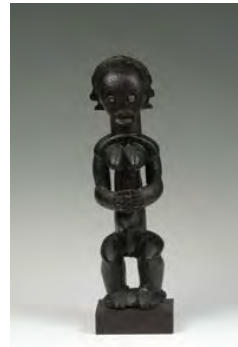
Fang peoples

Eyima Bieri (reliquary guardian figure)

Wood, metal

16 3/4 x 4 1/2 x 4 1/2 in. (42.55 x 11.43 x 11.43 cm)

The Stanley Collection



X1986.478

56.1981

Igala peoples

Female figure

Wood, pigment

20 x 6 1/2 x 6 1/2 in. (50.8 x 16.51 x 16.51 cm)

The Stanley Collection



1995.238

Igbo peoples

Horned Mask

Wood, metal, clay, shells

31 x 11 x 12 in. (78.74 x 27.94 x 30.48 cm)

Gift of Dr. Meredith Saunders



2006.377

254.2006

Igbo peoples

Agbogho mmuo (maiden spirit mask)

Wood, pigment

18 x 16 1/2 x 8 in. (45.72 x 41.91 x 20.32 cm)

John Harrison Estate Acquisition Fund



X1986.162

Igbo peoples

Ikenga (shrine figure)

Wood, sacrificial materials

16 1/2 x 4 x 4 in. (41.91 x 10.16 x 10.16 cm)

The Stanley Collection



2001.4

1090.2000

William Kentridge

The General

1993-1998

Drypoint with hand-coloring on handmade paper

47 1/4 x 31 1/2 in. (120.02 x 80.01 cm)

Museum purchase with funds from Shawn Zeitz and Emily Gatsby, and the Print and Drawing Study Club



X1986.573

764.1983

Kongo peoples

Nkisi (power figure)

Wood, iron nails, glass, resin

20 1/4 x 11 x 8 in. (51.44 x 27.94 x 20.32 cm)

The Stanley Collection



X1990.618

Kuba peoples
Cut-pile cloth

raffia, dye
28 x 12 1/2 in. (71.12 x 31.75 cm)
The Stanley Collection

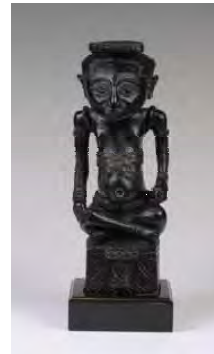


X1990.694

795.1989

Kuba peoples
Ndop (portrait of a king)

Wood
13 1/2 x 5 x 4 1/2 in. (34.29 x 12.7 x 11.43 cm)
The Stanley Collection



1986.76

Lega peoples
Mukuba and Kekumba (Hat)

Fiber, raffia, beads, wire, buttons and elephant tail
16 x 6 x 11 in. (40.64 x 15.24 x 27.94 cm)
Anonymous gift in honor of Betty Stanley

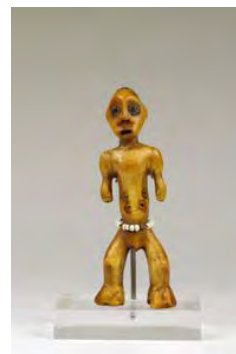


X1986.560

452.1983

Lega peoples
Figure [igingia]

Ivory, beads
4 15/16 x 2 x 1 in. (12.54 x 5.08 x 2.54 cm)
The Stanley Collection



X1986.571

762.1983

Lega peoples

Lukwakongo (mask)

Wood, kaolin, fiber

7 5/8 x 4 3/4 x 1 3/8 in. (19.37 x 12.07 x 3.49 cm)

The Stanley Collection



X1986.585

381.1984

Lega peoples

Figure [igingi]

Ivory

4 1/8 x 1 5/8 x 1 1/8 in. (10.48 x 4.13 x 2.86 cm)

The Stanley Collection



1996.187

680.1996

Lobi peoples

Janus (Male and Female) Staff

Wood

26 x 7 x 2 1/4 in. (66.04 x 17.78 x 5.72 cm)

From the Collection of Al and Margaret Coudron



X1986.298

Luba peoples

Mikisi mihake (female figure)

Wood

13 3/4 x 3 1/2 x 3 7/8 in. (34.93 x 8.89 x 9.84 cm)

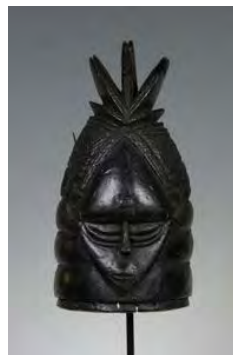
The Stanley Collection



X1986.336

Mende peoples
Sowei mask

Wood, pigment, metal
15 1/2 x 7 5/8 x 9 1/2 in. (39.37 x 19.37 x 24.13 cm)
The Stanley Collection



1979.43

Mossi peoples
Mask with costume

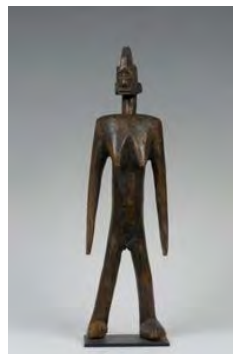
Polychromed wood, fiber
85 x 29 in. (215.9 x 73.66 cm)
The Stanley Collection



X1986.385

Mossi peoples
Female figure

Wood
22 1/2 x 6 1/2 x 4 1/2 in. (57.15 x 16.51 x 11.43 cm)
The Stanley Collection



1998.66

116.1998

Ndebele peoples
Mapoto (married woman's apron)

Glass, plastic, beads, leather, cloth
19 x 18 in. (48.26 x 45.72 cm)
Museum purchase



X1990.647

Solongo
Figure

Ivory
3 7/8 x 1 x 1 in. (9.84 x 2.54 x 2.54 cm)
The Stanley Collection



X1990.691

782.1989

Solongo
Figure

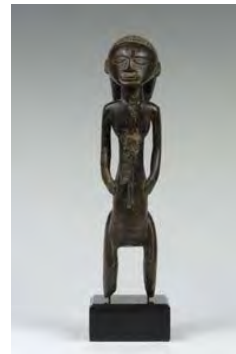
Ivory
4 3/4 x 1 3/8 x 1 in. (12.07 x 3.49 x 2.54 cm)
The Stanley Collection



X1990.704

Tabwa peoples
Mipasi (ancestor figure)

Wood
11 1/2 x 2 1/2 x 3 1/4 in. (29.21 x 6.35 x 8.26 cm)
The Stanley Collection



2009.3

2003.2009

Yoruba peoples
Lawyer's wig

15 x 9 1/4 x 9 1/4 in. (38.1 x 23.5 x 23.5 cm)
General Education Fund



X1986.502

249.1983

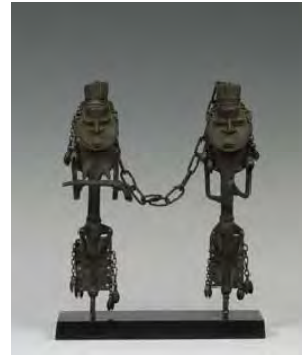
Yoruba peoples

Edan (pair of figures for Ogboni society)

Bronze

11 5/8 x 10 5/8 x 2 in. (29.53 x 26.99 x 5.08 cm)

The Stanley Collection



1981.257

Judy Chicago

Through the Flower 2

1972

Lithograph

22 x 22 in. (55.88 x 55.88 cm)

Gift of Lloyd E. Rigler



1981.258

Judy Chicago

Through the Flower 3

1972

Lithograph

22 x 22 in. (55.88 x 55.88 cm)

Gift of Lloyd E. Rigler



1981.259

Judy Chicago

Through the Flower I

1972

Lithograph on calendared Rives BFK

22 x 22 in. (55.88 x 55.88 cm)

Gift of Lloyd E. Rigler



1981.260

Judy Chicago

Through the Flower Twice

1972

Lithograph on calendared Rives BFK

22 x 22 in. (55.88 x 55.88 cm)

Gift of Lloyd E. Rigler



1983.108

Judy Chicago

Flesh Raising Her Arms in Supplication

1974

Ceramic, plex, fabric and china paint

2 x 6 x 6 in. (5.08 x 15.24 x 15.24 cm)

Gift of Joan E. Mannheimer



2010.22

Ana Mendieta

Untitled, from "Silueta Works in Mexico"

September 1976, printed 1991

C-print

20 x 16 in. (50.8 x 40.64 cm)

From the estate of Marlene R. Moskowitz, donated in her memory by her children, Howard R. Gerwin and Carol S. Gerwin



009.2012

Ana Mendieta

Imagen de Vaagul (Thesis Piece - triptych) 1977.45

2012.202

Lil Picard

Burned Tie

1968

Silk ties mounted on board

30 x 18 15/16 in. (76.2 x 48.1 cm)

Lil Picard Collection



2012.442

Lil Picard

Ritual Happening

1964

Mixed media

10 3/4 x 15 7/8 x 12 1/2 in. (27.31 x 40.32 x 31.75 cm)

Lil Picard Collection



2012.462

Lil Picard

Lady Woolworth

1963

Assemblage on cardboard

24 x 18 in. (60.96 x 45.72 cm)

Lil Picard Collection



2003.2

Miriam Schapiro

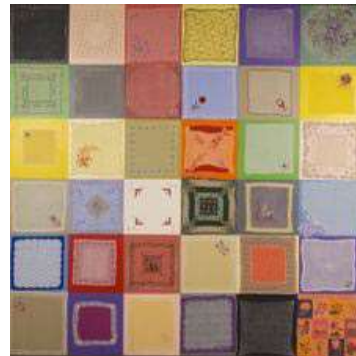
Connection

1978

Acrylic and fabric on canvas

60 x 60 in. (152.4 x 152.4 cm)

Museum purchase, Edwin B. Green American Art Endowment



2007.39

Miriam Schapiro

Re: Art History

1975

Lithograph

25 x 25 in. (63.5 x 63.5 cm)

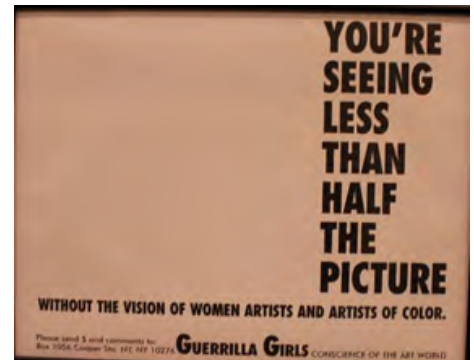
Gift of the Artist



Guerrilla Girls
Estrogen Bomb
24 ¼ x 24 ¼ in.
UIMA School Programs Collections, EPC.48



Guerrilla Girls
You're Seeing Less Than Half the Picture
17 3/8 x 22 ¼ in.
UIMA School Programs Collections, EPC.49



Guerrilla Girls
Do Women Have to be Naked to get into the Met. Museum?
12 ¼ x 26 ¼ in.
UIMA School Programs Collections ,EPC.50



4.2016

Grant Wood

Sketch for Daughters of the Revolution

1932



1985.92

Grant Wood

Sketch for The Birthplace of Herbert Hoover

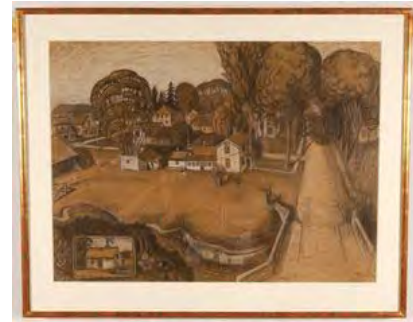
United States of America

1931

Charcoal, chalk, and graphite on tan paper

29 3/8 x 39 3/8 in. (74.61 x 100.01 cm)

Gift of Edwin B. Green in tribute to Nan Wood Graham



1984.56

Grant Wood

Plaid Sweater

United States of America

1931

Oil on masonite

29 1/2 x 24 1/8 in. (74.93 x 61.28 cm)

Gift of Mel R. and Carole Blumberg and Family, and Edwin B. Green through The University of Iowa Foundation



2011.68

Grant Wood

Blue House, Munich

1928

Oil on Board

23 1/2 x 20 1/4 in. (59.69 x 51.44 cm)

Gift of Catharine Miller Ahman and Edward J. Ahmann, Dorothy Miller Brecunier and Richard W. Brecunier, and Theza Lichtman Miller and Robert Scott Miller



1988.12

Grant Wood

Honorary Degree

1938

Lithograph

16 1/8 x 12 in. (40.96 x 30.48 cm)

Gift of Edwin B. Green



1988.14

Grant Wood

Tree Planting Group

1937

Lithograph

11 3/4 x 16 in. (29.85 x 40.64 cm)

Gift of Edwin B. Green



1988.15

Grant Wood

Fertility

1939

Lithograph

12 x 15 7/8 in. (30.5 x 40.3 cm)

Gift of Edwin B. Green



1988.7

Grant Wood

In the Spring

1939

Lithograph

11 7/8 x 16 1/8 in. (30.2 x 41 cm)

Gift of Edwin B. Green



1988.9

Grant Wood

Sultry Night

1937

Lithograph

11 7/8 x 16 in. (30.2 x 40.6 cm)

Gift of Edwin B. Green



1984.21

Grant Wood

Bundles for Britain [World War II poster]

c. 1940

Poster reproduction on cardboard with foldout stand

25 1/4 x 20 1/2 in. (64.14 x 52.07 cm)

Gift of Edwin B. Green



1947.44

Mitchell Siporin

Endless Voyage

1946

Oil on canvas

43 3/4 x 48 3/4 in. (111.13 x 123.83 cm)

University acquisition



2006.363

Willie Cole

Men of Iron

2004

Ink-jet

22 x 29 in. (55.88 x 73.66 cm)

Gift of the Judith K. and David J. Brodsky Center for Print and Paper,
Rutgers University



1958.1

Marsden Hartley

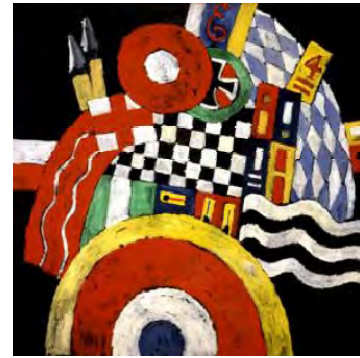
E

1915

Oil on canvas

50 1/8 x 50 1/8 in. (127.32 x 127.32 cm)

Mark Ranney Memorial Fund



2008.18A-I

Daniel Heyman

The Amman Portfolio

United States of America

2006

Drypoint on BFK

27 x 22 1/2 in. (68.58 x 57.15 cm)

Museum purchase with funds from Julie and G. Carl Schweser



2010.34A

Southern Cheyenne

*Whaton: man on horseback, man with prisoner,
from page 43 of the Paul Rossi Ledger*

United States of America

1874

Charcoal, and natural colors on paper

11 7/8 x 5 1/2 in. (30.15 x 13.97 cm)

Gift of Gerald and Hope Solomons



2010.34B

Southern Cheyenne

*Twelve Soldiers, from page 44 of the Paul Rossi
Ledger on the back of 2010.34A*

United States of America

1874

Charcoal, and natural/commercial colors on paper

11 7/8 x 5 1/2 in. (30.15 x 13.97 cm)

Gift of Gerald and Hope Solomons



2010.37

Southern Cheyenne

*Courting: man, woman, horse, from page 51 of the
Old White Woman Ledger*

United States of America

1880-1890

Charcoal, natural and commercial colors on paper

11 3/4 x 7 1/4 in. (29.85 x 18.42 cm)

Gift of Gerald and Hope Solomons



Alec Soth (American, 1969–)
Codey and Jodi, Engadine, 2012
Photograph, 14 ½ x 11 ½ in.
UIMA School Programs Collections, GNC.22A–C



Alec Soth (American, 1969–)
Miguel, Ten Months Old. Woodville Farm Labor Camp, 2012
Photograph, 14 x 15 ½ in.
UIMA School Programs Collections, GNC.23A–C



Alec Soth (American, 1969–)
Near Albany, 2012
Photograph, 14 x 15 ½ in.
UIMA School Programs Collections, GNC.24A–C



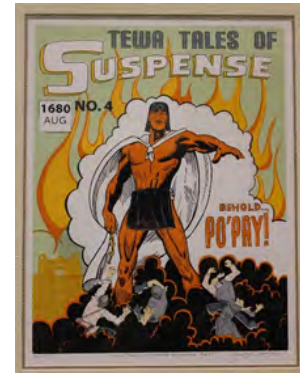
Alec Soth (American, 1969–)
Abandoned Day Care Center, Dover, Ohio, 2012
Photograph, 14 x 15 ½ in.
UIMA School Programs Collections, GNC.25A–C



Alec Soth (American, 1969–)
South Saint Mary Cemetery, Walsenburg, 2013
Photograph, 16 x 12 ¾ in.
UIMA School Programs Collections, GNC.32A–C



Jason Garcia (American; Tewa, 1973–)
Tewa Tales of Suspense, no. 4: Behold Po'Pay!, 2014
Serigraph, 11 ¾ x 8 ½ in.
UIMA School Programs Collections, GNC.37



Ho Che Anderson (British, 1969–)
King, vol. 2, pg. 22, Fantagraphics Books, 1995
Ink, pencil, non-photo blue pencil, paper, photocopied photo, 13 x 19 in.
UIMA School Programs Collections, GNC.6



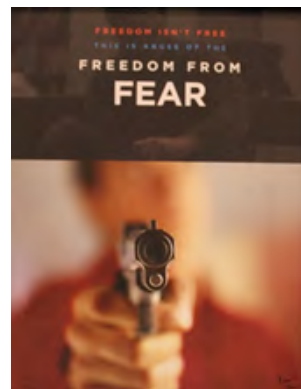
Matt Madden (American, 1968–)
Odds Off, pg. 76, Highwater Books, 2000
Pencil, ink, paper, 14 ¼ x 11 in.
UIMA School Programs Collections, GNC.14



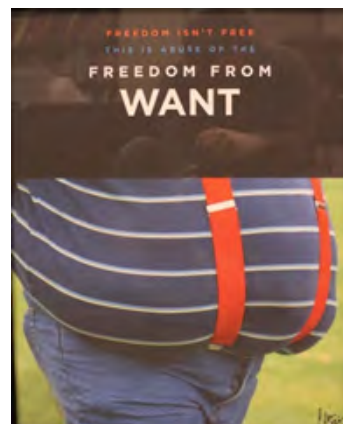
James Sturm (American, 1965–)
The Golem's Mighty Swing, pg. 21, Drawn and Quarterly, 2001
Pencil, ink, paper, 14 x 11 ½ in.
UIMA School Programs Collections, GNC.17



Chip Kidd
Freedom from Fear
20 ¼ x 16 ¼ in.
UIMA School Programs Collections, EPC.44



Chip Kidd
Freedom from Want
20 ¼ x 16 ¼ in.
UIMA School Programs Collections, EPC.45



Chip Kidd

Freedom of Speech

20 ¼ x 16 ¼ in.

UIMA School Programs Collections, EPC.46



Chip Kidd

Freedom of Worship

20 ¼ x 16 ¼ in.

UIMA School Programs Collections, EPC.47

